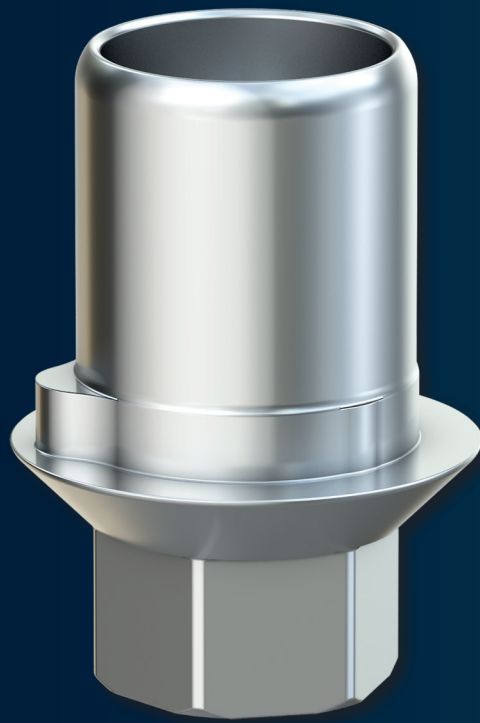


# » BS-SERIES «



The BS-Series abutments are compatible with



**BEGO Implant Systems®**  
**Semados® S-Line**  
**Semados® RS/RSX-Line**  
**Semados® RI-Line**

### Laboratory implant CAD/CAM

- Stainless steel



Implant connection	D 3,25/3,75	D 4,1	D 4,5	D 5,5
Article Number	BS 80	BS 81	BS 82	BS 83

Please note: This is used for 3D printmodels with Scanbody 2. generation.

### Placement instrument laboratory implant CAD/CAM

- Stainless steel



Implant connection	D 3,25-5,5
Article Number	BS 80 T

### Abutment screw

- Titanium grade 5 KV
- Hex 1.26



Article Number	BS 60
----------------	-------

### Laboratory screw

- red coated



Article Number	BS 60 L
----------------	---------

### Titanium base Zirconium abutment 2<sup>nd</sup> Generation

- Titanium grade 5 KV
- incl. abutment screw
- Recommended torque: 30 Ncm



Implant connection	D 4,1	D 4,5	D 5,5
Chimney height (mm)	3,5	3,5	3,5
Gingiva height (mm)	0,1	0,1	0,1
Article Number	BS 1010	BS 1020	BS 1030
Abutment screw	BS 60	BS 60	BS 60
Laboratory screw	BS 60 L	BS 60 L	BS 60 L

Please note: This is used with Scanbody 2. generation.

### Titanium base Zirconium abutment 2<sup>nd</sup> Generation

- Titanium grade 5 KV
- incl. abutment screw
- Recommended torque: 30 Ncm

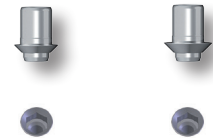


Implant connection	D 4,1	D 4,5	D 5,5
Chimney height (mm)	5.5	5.5	5.5
Gingiva height (mm)	0,1	0,1	0,1
Article Number	BS 1110	BS 1120	BS 1130
Abutment screw	BS 60	BS 60	BS 60
Laboratory screw	BS 60 L	BS 60 L	BS 60 L

Please note: This is used with Scanbody 2. generation.

### Titanium base Bridges/ bars 2<sup>nd</sup> Generation

- rotating
- Titanium grade 5 KV
- incl. abutment screw
- Recommended torque: 30 Ncm

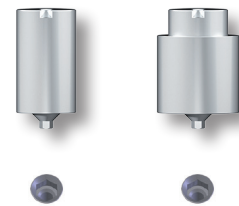


Implant connection	D 4,1	D 4,5
Chimney height (mm)	3.5	3.5
Gingiva height (mm)	0,15	0,15
Article Number	BS 1510	BS 1520
Abutment screw	BS 60	BS 60
Laboratory screw	BS 60 L	BS 60 L

Please note: This is used with Scanbody 2. generation.

### PreFace® abutment

- Titanium grade 5 KV
- incl. abutment screw
- Recommended torque: 30 Ncm



Implant connection	D 3,25-5,5	D 3,25-5,5
Diameter (mm)	11.5	16.0
Article Number	BS 9000-R	BS 9000-16R
Abutment screw	BS 60	BS 60
Laboratory screw	BS 60 L	BS 60 L

Please note: This is used with Scanbody 2. generation.

### PreFace® abutment

- CrCo alloy / CTE 14.1
- incl. abutment screw
- Recommended torque: 30 Ncm



Implant connection	D 3,25-5,5
Diameter (mm)	16.0
Article Number	BS 9800-16R
Abutment screw	BS 60
Laboratory screw	BS 60 L

Please note: This is used with Scanbody 2. generation.

### Scanbody 2<sup>nd</sup> Generation

- Titanium grade 5 KV
- specially coated
- incl. retention screw

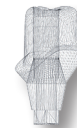
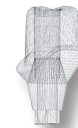
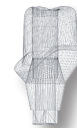


Implant connection	D 3,25-5,5
Article Number	BS 1400

Please note: The Scanbody is sterilisable and for intra-oral scanning.

### MedentiCAD abutment

- Titanium grade 5 KV
- incl. abutment screw
- Recommended torque: 30 Ncm

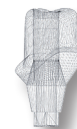


Implant connection	D 3,25/3,75	D 4,1	D 4,5	D 5,5
Article Number	BS 900001	BS 901001	BS 902001	BS 903001
Abutment screw	BS 60	BS 60	BS 60	BS 60
Laboratory screw	BS 60 L	BS 60 L	BS 60 L	BS 60 L

Please note: Custom made abutment, will be created with Scanbody 2. generation.

### MedentiCAD abutment

- CrCo alloy / CTE 14.1
- incl. abutment screw
- Recommended torque: 30 Ncm



Implant connection	D 3,25/3,75	D 4,1	D 4,5	D 5,5
Article Number	BS 900004	BS 901004	BS 902004	BS 903004
Abutment screw	BS 60	BS 60	BS 60	BS 60
Laboratory screw	BS 60 L	BS 60 L	BS 60 L	BS 60 L

Please note: Custom made abutment, will be created with Scanbody 2. generation.