

>> CX-SERIES <<



The CX-Series abutments are compatible with



Medentis Medical[®]
ICX[®]

Laboratory implant CAD/CAM

- Stainless steel



Implant connection

D 3,75-4,8

Article Number

CX 80

Please note: This is used for 3D printmodels with Scanbody 2. generation.

Placement instrument laboratory implant CAD/CAM

- Stainless steel



Implant connection

D 3,75-4,8

Article Number

CX 80 T

Abutment screw

- Titanium grade 5 KV
- Hex 1,4



Article Number

CX 60

Laboratory screw

- red coated



Article Number

CX 60 L

Titanium base Zirconium abutment 2nd Generation

- Titanium grade 5 KV
- incl. abutment screw
- Recommended torque: 30 Ncm



Implant connection

D 3,75-4,8

D 3,75-4,8

Chimney height
(mm)

3,5

3,5

Gingiva height (mm)

0,65

1,15

Article Number

CX 1000

CX 1200

Abutment screw

CX 60

CX 60

Laboratory screw

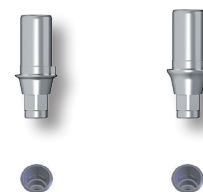
CX 60 L

CX 60 L

Please note: This is used with Scanbody 2. generation.

Titanium base Zirconium abutment 2nd Generation

- Titanium grade 5 KV
- incl. abutment screw
- Recommended torque: 30 Ncm



Implant connection	D 3,75-4,8	D 3,75-4,8
Chimney height (mm)	5.5	5.5
Gingiva height (mm)	0,65	1,15
Article Number	CX 1100	CX 1300
Abutment screw	CX 60	CX 60
Laboratory screw	CX 60 L	CX 60 L

Please note: This is used with Scanbody 2. generation.

Titanium base Bridges/bars 2nd Generation

- rotating
- Titanium grade 5 KV
- incl. abutment screw
- Recommended torque: 30 Ncm

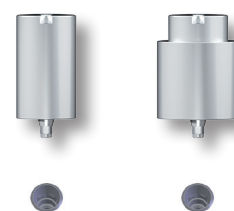


Implant connection	D 3,75-4,8
Chimney height (mm)	3.5
Gingiva height (mm)	0,65
Article Number	CX 1500
Abutment screw	CX 60
Laboratory screw	CX 60 L

Please note: This is used with Scanbody 2. generation.

PreFace® abutment

- Titanium grade 5 KV
- incl. abutment screw
- Recommended torque: 30 Ncm



Implant connection	D 3,75-4,8	D 3,75-4,8
Diameter (mm)	11.5	16.0
Article Number	CX 9000-R	CX 9000-16R
Abutment screw	CX 60	CX 60
Laboratory screw	CX 60 L	CX 60 L

Please note: This is used with Scanbody 2. generation.

PreFace® abutment

- CrCo alloy / CTE 14.1
- incl. abutment screw
- Recommended torque: 30 Ncm



Implant connection	D 3,75-4,8
Diameter (mm)	16.0
Article Number	CX 9800-16R
Abutment screw	CX 60
Laboratory screw	CX 60 L

Please note: This is used with Scanbody 2. generation.

Scanbody 2nd Generation

- Titanium grade 5 KV
- specially coated
- incl. retention screw

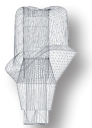


Implant connection	D 3,75-4,8
Article Number	CX 1400

Please note: The Scanbody is sterilisable and for intra-oral scanning.

MedentiCAD abutment

- Titanium grade 5 KV
- incl. abutment screw
- Recommended torque: 30 Ncm

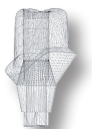


Implant connection	D 3,75-4,8
Article Number	CX 900001
Abutment screw	CX 60
Laboratory screw	CX 60 L

Please note: Custom made abutment, will be created with Scanbody 2. generation.

MedentiCAD abutment

- CrCo alloy / CTE 14.1
- incl. abutment screw
- Recommended torque: 30 Ncm



Implant connection	D 3,75-4,8
Article Number	CX 900004
Abutment screw	CX 60
Laboratory screw	CX 60 L

Please note: Custom made abutment, will be created with Scanbody 2. generation.